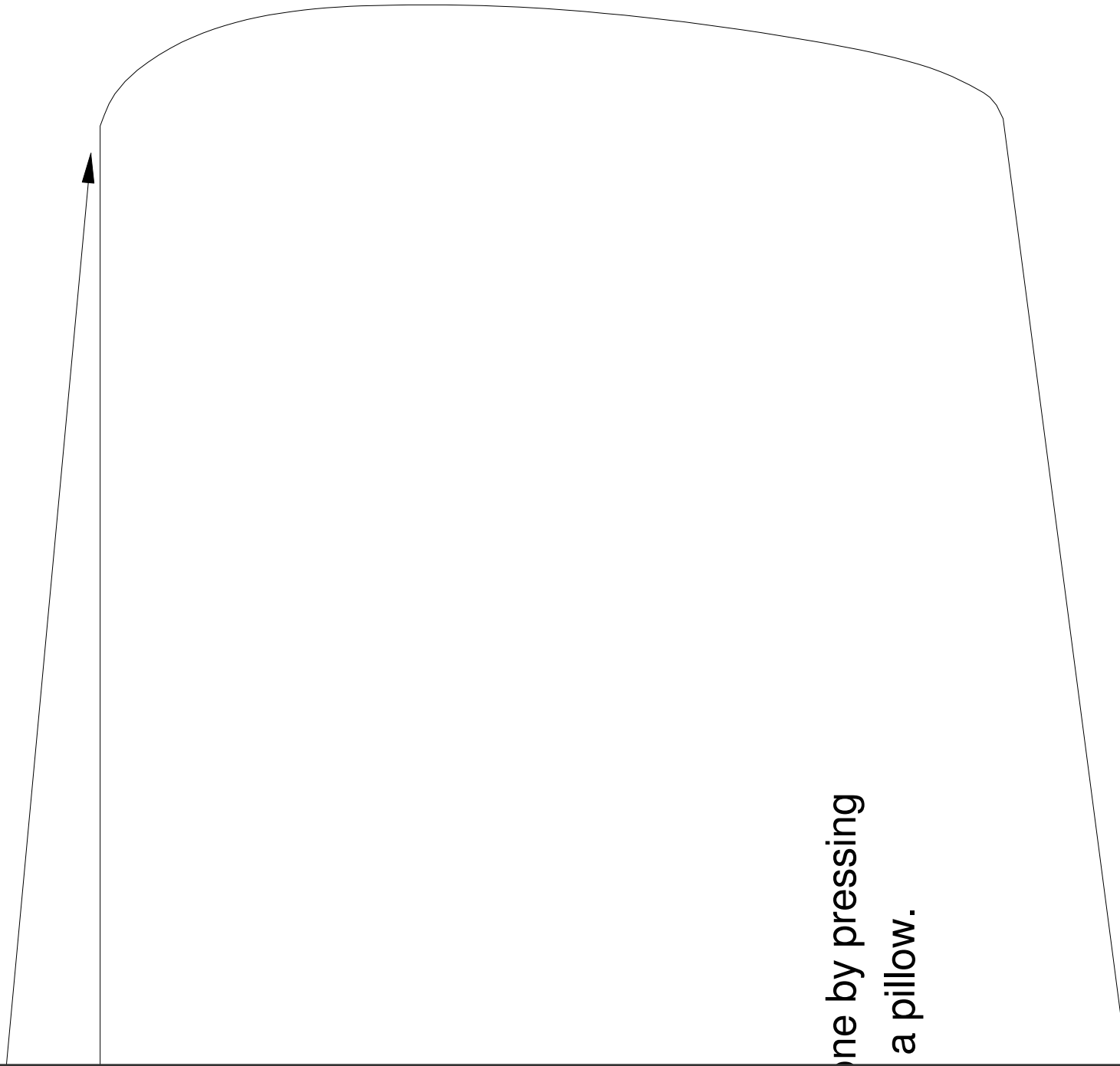
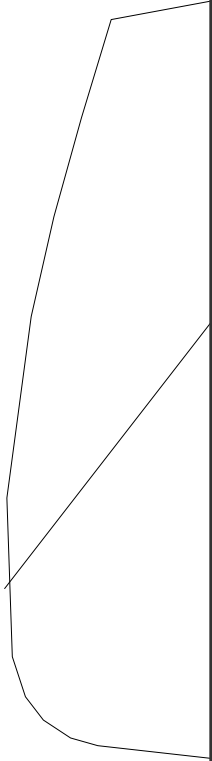


p1, row1, col1

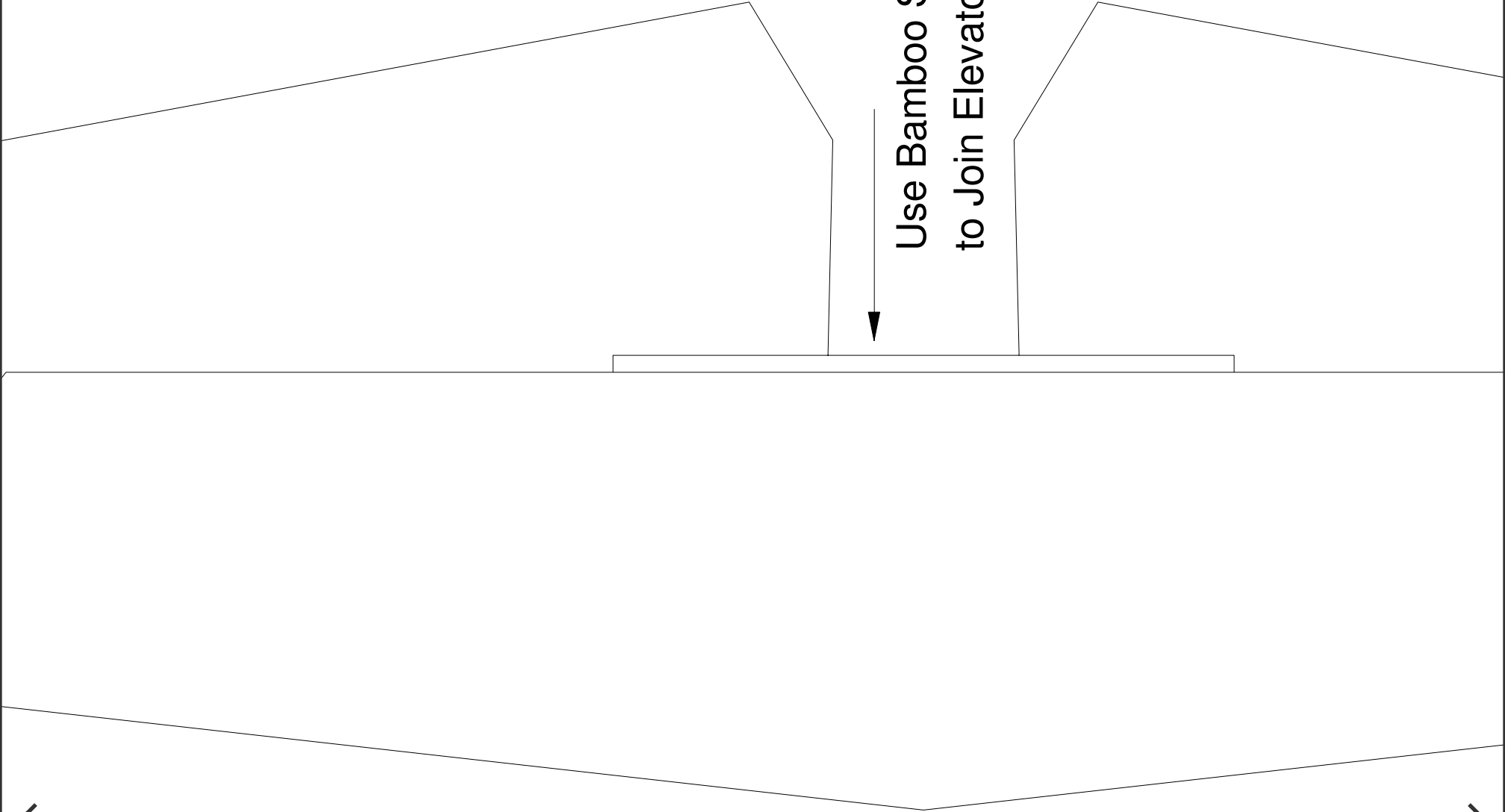


one by pressing
a pillow.

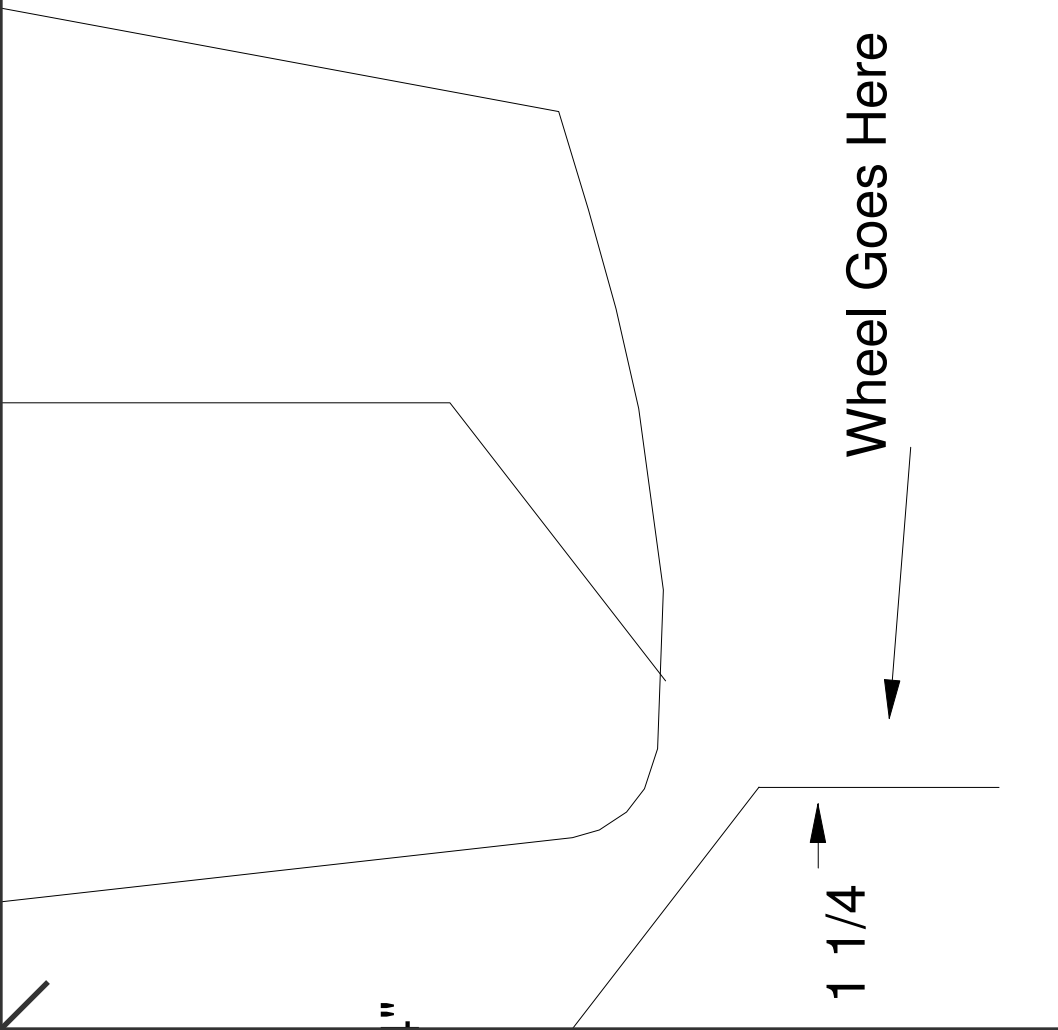


p1, row1, col2

Use Bamboo Skewer
to Join Elevator Halves



p1, row1, col3



Wheel Goes Here

1 1/4

"

p1, row1, col4

5mm x .6mm Carbon Strip on Each Wing Half
Glued on After Ply Braces are Attached

p1, row2, col1

Wing Half

Make a right and left

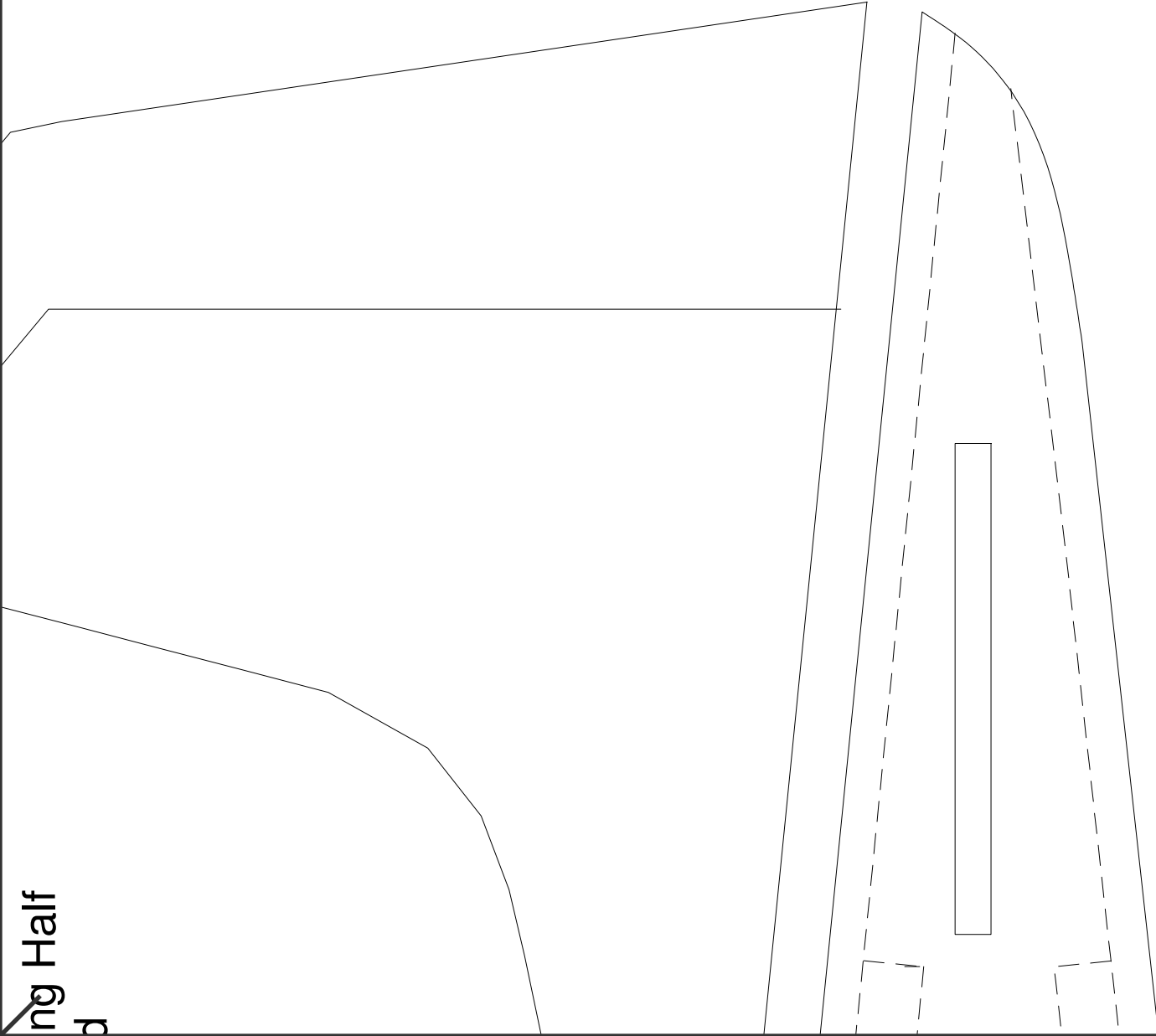
Here

This wing must be formed before anything is glued to it.
Form to the wing saddle on the fuselage. This can be done
it on the edge of a table or rolling it on a piece of foam or
A lot has written on how to form Depron on RC Groups.



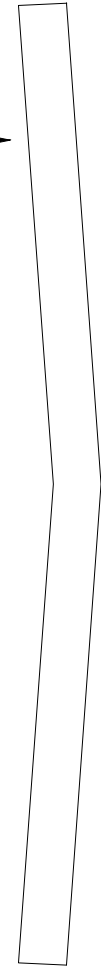
ing Half
d

p1, row2, col2

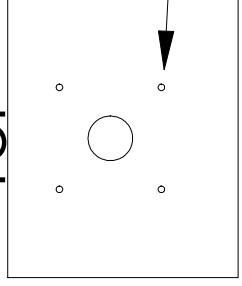


1/8" Plywood Parts
Unless Noted

Wing Brace
Make 2



TOP



Screw holes for
Blue Wonder Motor
2712-12

Motor Mount

1/4" Ply

MOTOR MOUNT

1/16 Ply

Control Horn make 2

p1, row2, col3

5/8"



2 1/2"

3 3/4"

.065 Music Wire Landing Gear
make 1 for each side

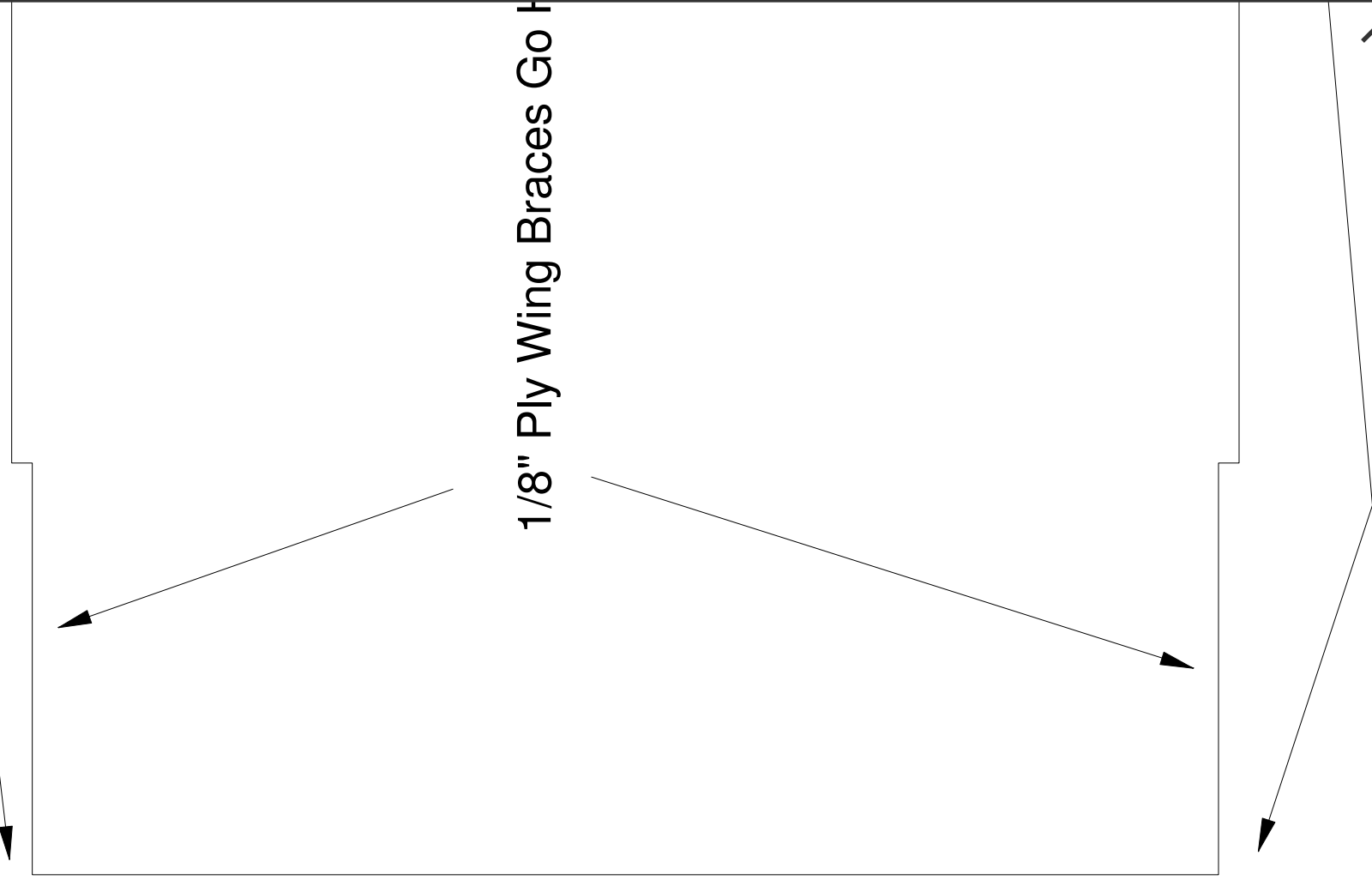
p1, row2, col4

p1, row3, col1

Noted

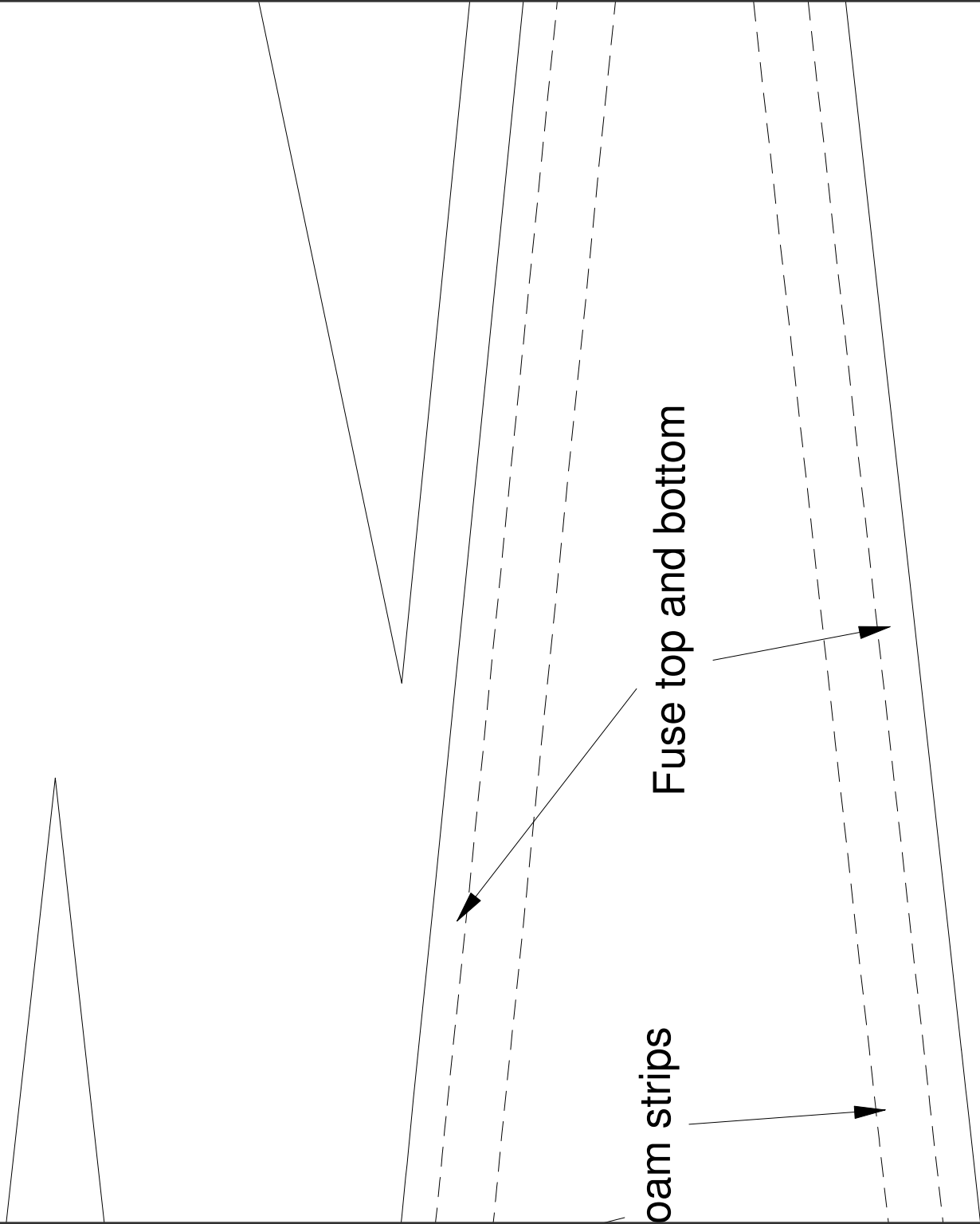
1/8" Ply Wing Braces Go H

ock



5mm x .6mm Carbon Strip on Each W
Glued on After Ply Braces are Attache

, row3, col2



Foam strips

Fuse top and bottom

e Bottom

Hint: Install control rods before
gluing on top and bottom

p1, row3, col3

and sold and

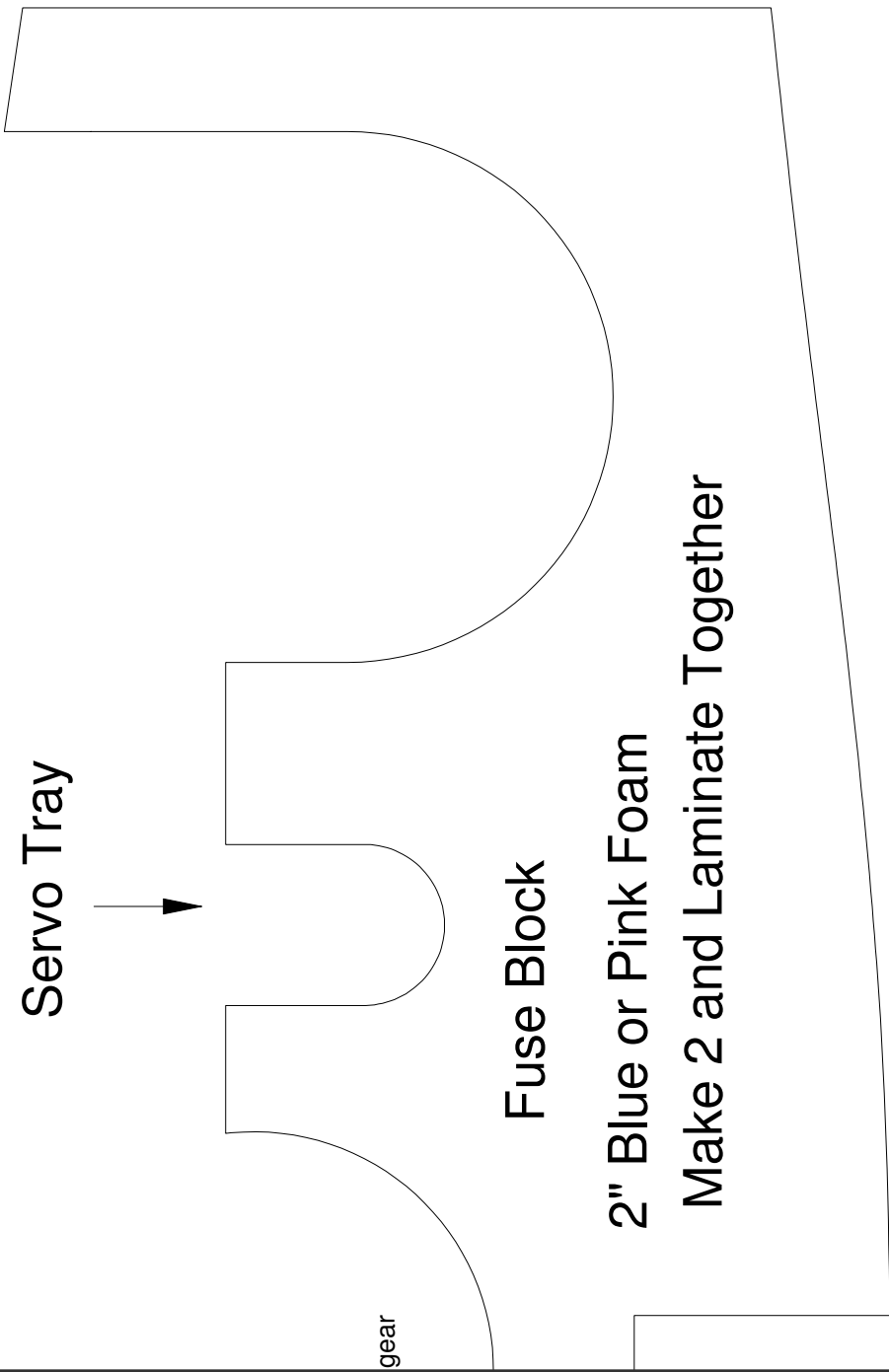
Bottom rear sanding
guide for fuse block
before Depron sides

Make from
cardstock



p1, row3, col4

Parts are Depron Unless



Servo Tray

Fuse Block

2" Blue or Pink Foam

Make 2 and Laminare Together

gear

Cut this out in only 2
of the doublers
This is a slot for the
Landing Gear Wire

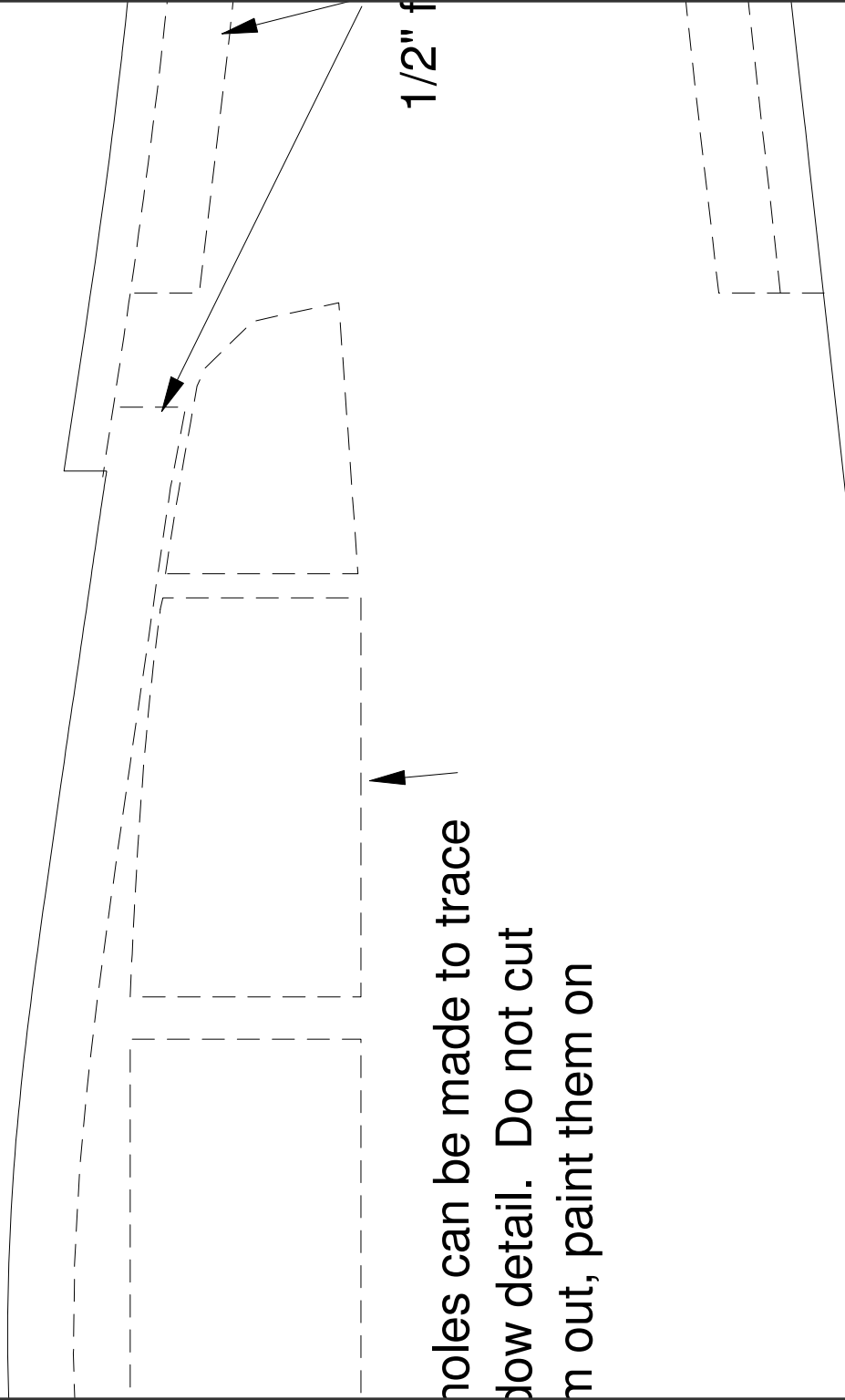
Top front sanding guide for b
before depron sides

Make from cardstock

p1, row4, col2

1/2" f

Fus



holes can be made to trace
show detail. Do not cut
them out, paint them on

5

be reproduced. This design cannot be cut
Budget RC. Build and enjoy!

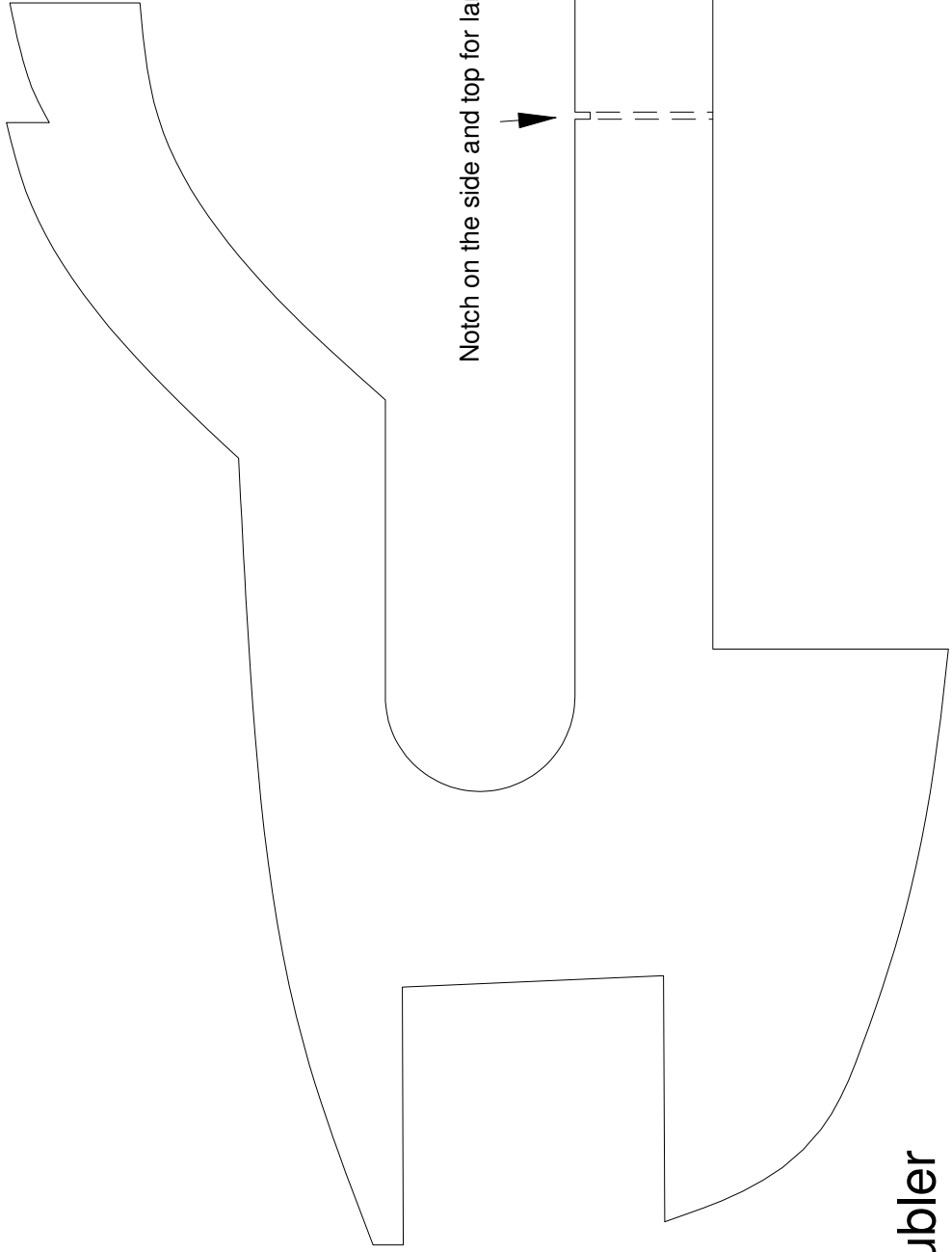
lget RC www.budgetrc.com

Schoenrock

p1, row4, col4

All

6"



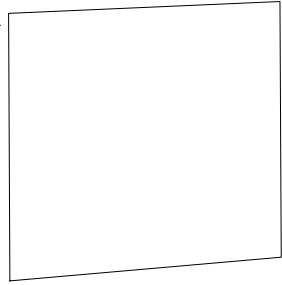
Notch on the side and top for landing



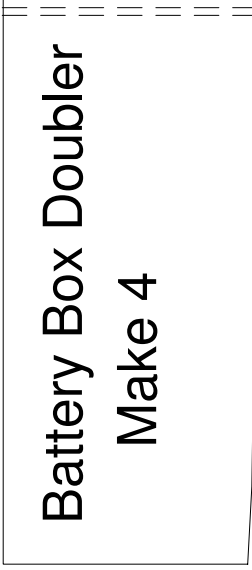
Nose Doubler
Make 1



Nose Doubler
Make 4



Battery Box Doubler
Make 4



p1, row5, col2

Fuse Top

Hint: Pin M
wind
ther

Fuselage Make 2 sides
Cut out Outline

ding Gear Cover
Make 2

1.5+ Inc.

Camber 2.4%

at 40.2% of cord

Dihedral 1.75" each tip

Thrust 2.5 deg. down

Cessna 18

These plans may
is the property of

Designed by Bud
Drawn by Mark S

p1, row5, col4

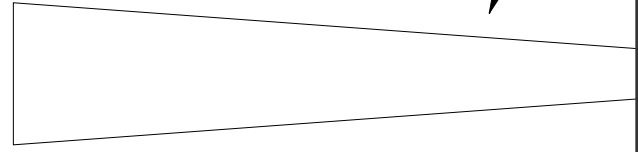
p1, row6, col1

N
T
M

6"

p1, row6, col2

Lan



p1, row6, col3

Wing:

Engine

p1, row6, col4