

# Super Bandit Park Jet EDF

Scaling = 75% from original

50mm Microfan

Span = 24.2 in

Area = 124 sq in

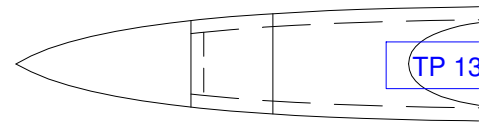
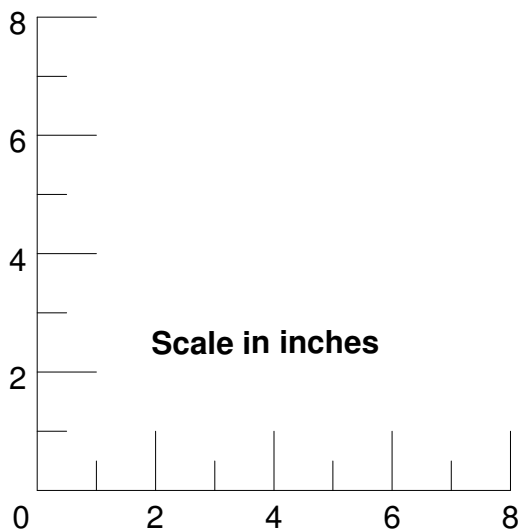
FSA = 2.15 sq in

Exhaust area = 1.83 sq in (85% FSA)

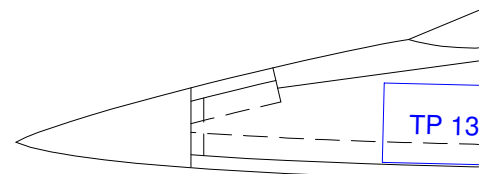
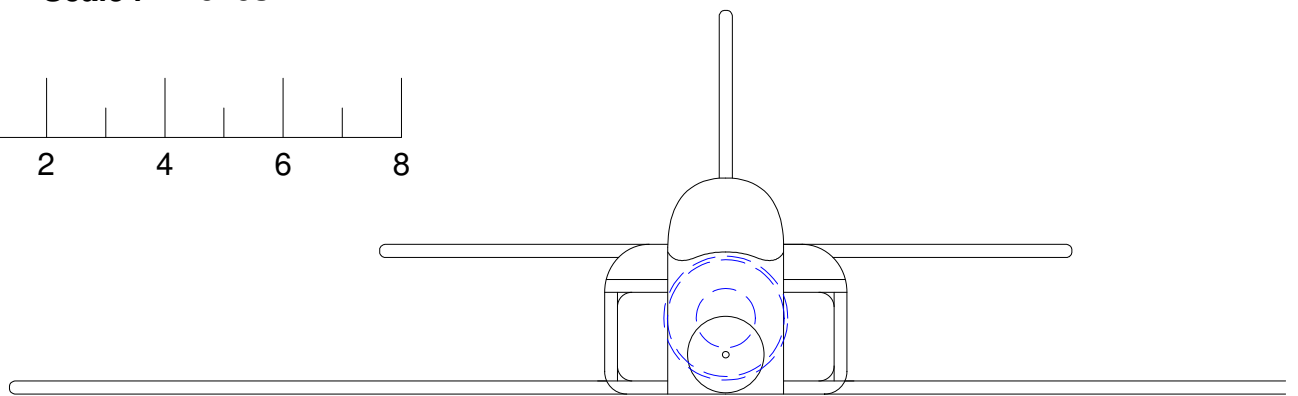
Inlet area = 2.5 sq in (116% FSA)

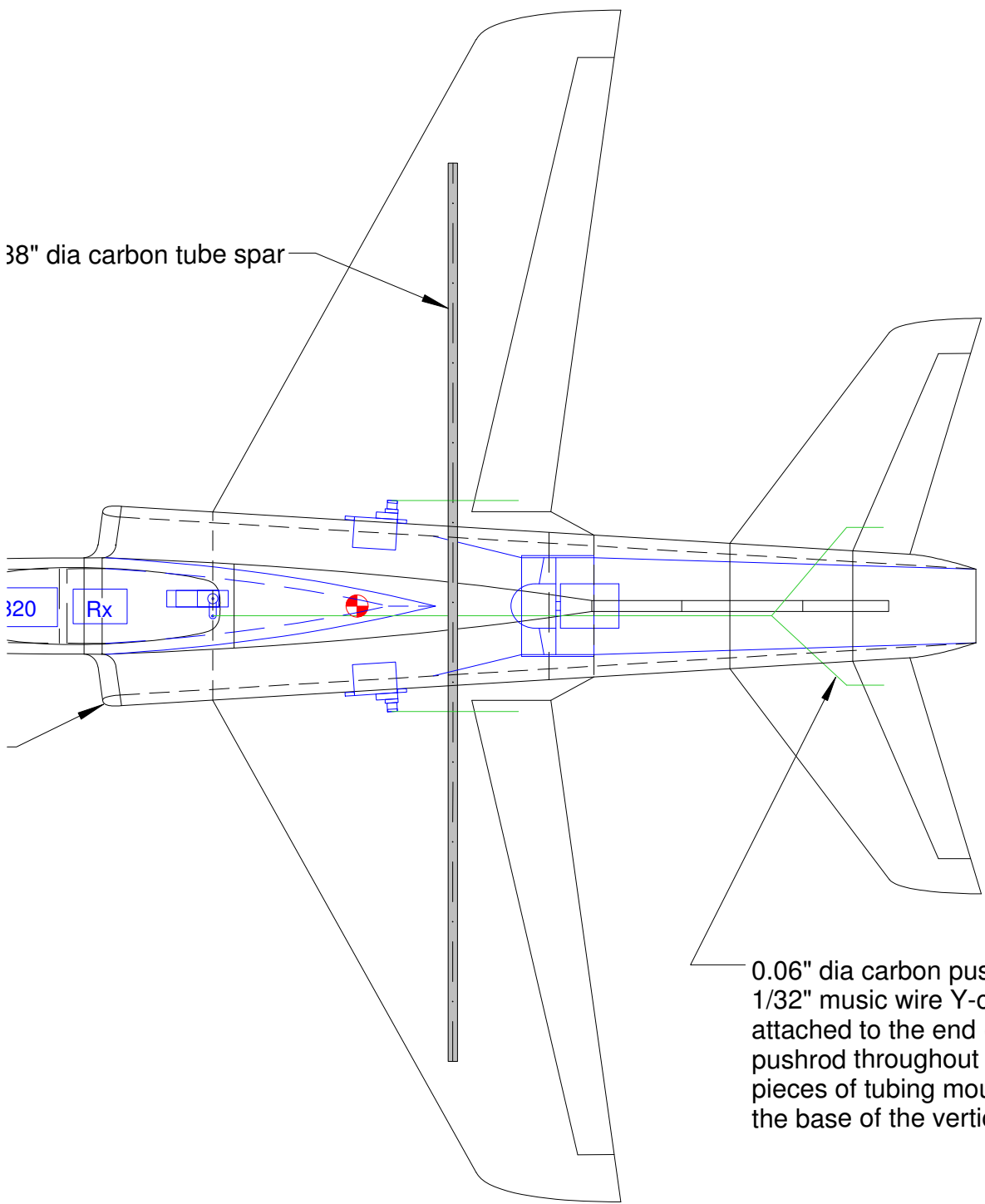
0.18

All parts made from 6mm Depron or BlueCore



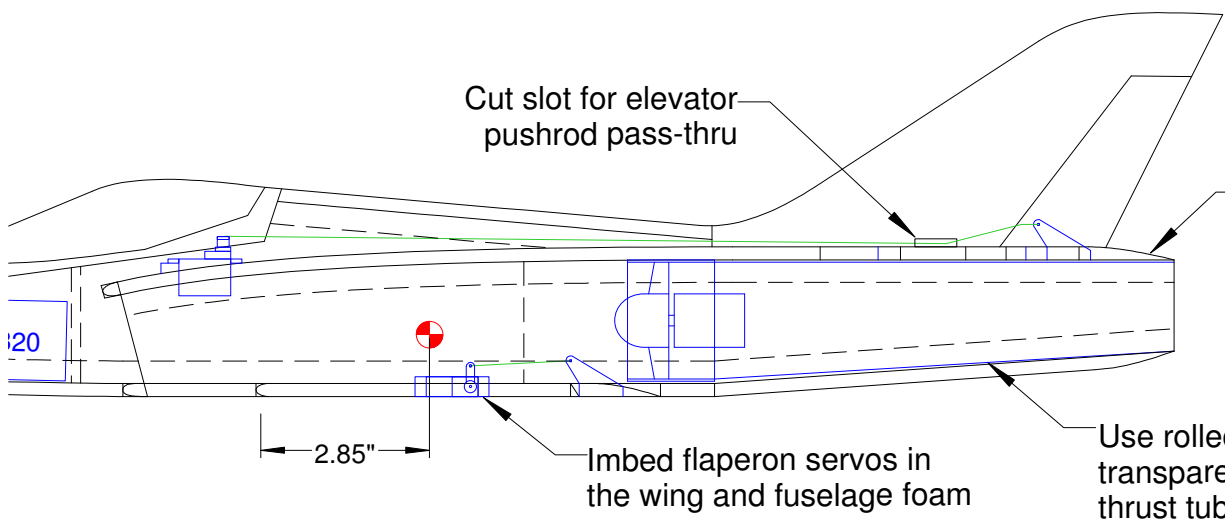
Sand all inlet edges to a well-rounded shape





38" dia carbon tube spar

0.06" dia carbon pushrod with 1/32" music wire Y-connector attached to the end (support pushrod throughout with small pieces of tubing mounted at the base of the vertical tail)



Cut slot for elevator pushrod pass-thru

Sand foam to a feathered edge on exterior

320

2.85"

Imbed flaperon servos in the wing and fuselage foam

Use rolled plastic transparency for thrust tube